



RÄDLINGER

MECHANICAL ENGINEERING

Tilt Motor „JR Tilt 90“

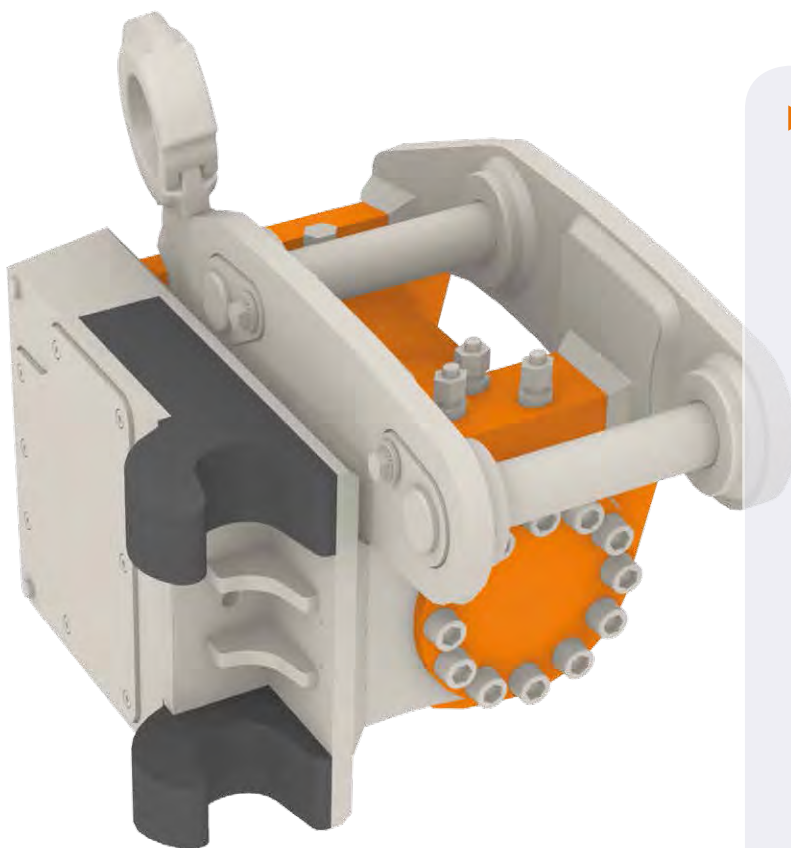


RÄDLINGER GROUP



► Application

The tilt motor JR Tilt 90 permits the vertical tilting of attachments at an angle of 90 degrees to the left and right. This allows all attachments to be used even more efficiently. In addition, the tilt motor enhances the application options and excavator performance. With the JR Tilt 90 Rädlinger was reacting to increasing demand in the gardening and landscaping sectors; the result was a product essential for all construction work. It fulfils all requirements of maximum flexibility, versatility and productivity for attachments. At the same time, the tilt motor JR Tilt 90 makes work in the tightest of spaces possible.

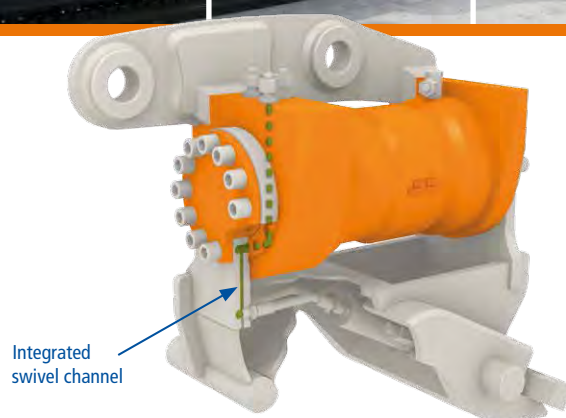
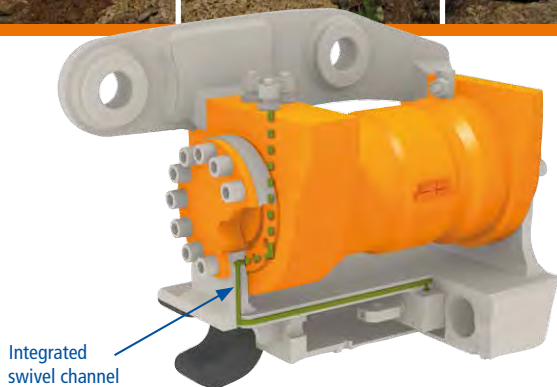
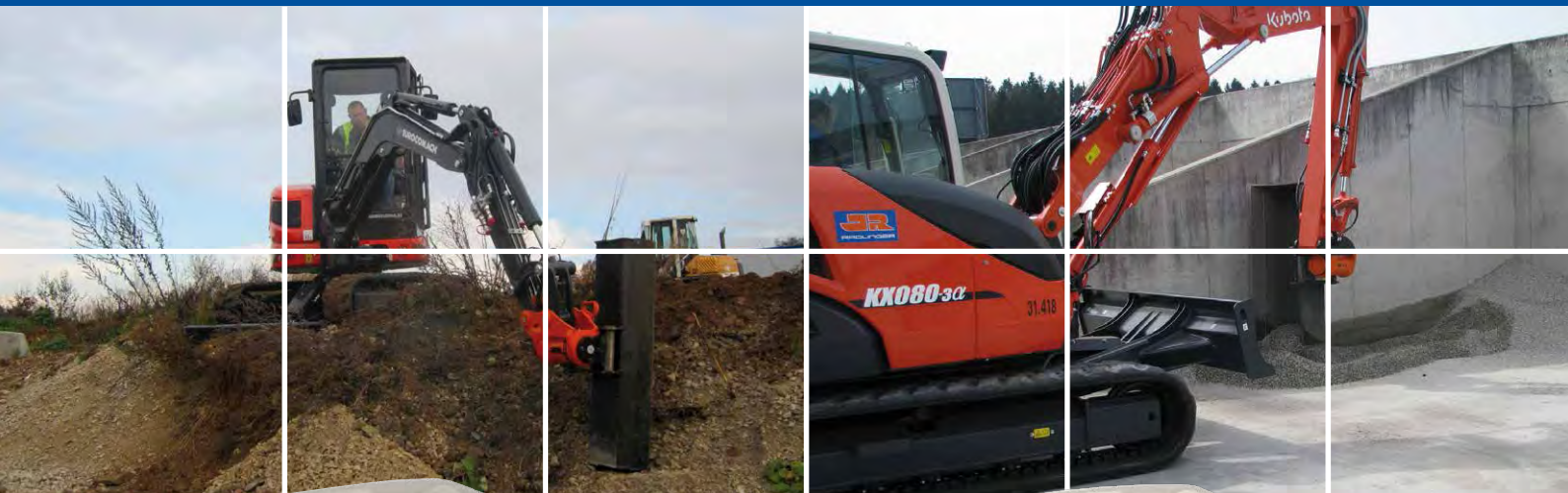


► Features

The new tilt motor combines tried-and-trusted Rädlinger quality and long-term experience with new features:

- Tilting angle 2 x 90°, limited by a mechanical stop
- Integrated swivel channel for the hose-free control of hydraulic quick-coupler systems
- Pressure relief valve secured with 310 bar for maximum torques and detent torques
- Safety tested and certified by BG
- Compact: optimised installation height and length
- Sturdy: extremely robust and wear-resistant thanks to the use of high-strength alloys / nitriding
- Welding suspension as standard, for minimum installation heights
- Fits on all standard quick-coupler systems
- Protected hydraulic connection points
- Optional hydraulic package for a wide range of different carrier machines
- Optimised design size for the respective machine classes





► JR Tilt 390 (1,8 - 3,8 t)

Dimensions (b x h x l):	165 x 145 x 267
Weight:	26 kg
Tilt angle:	180°
Torque:	1.200 Nm at 300 bar
Retention torque:	ca. 2.550 Nm at 300 bar
Oil requirement:	0,18 ltr. / 180°
Operating pressure	210 bar
Max. operating pressure	310 bar
Build-up recommendations:	Syst. Lehnhoff HS01 / HS03 Syst. Verachtert CW05

► JR Tilt 590 (3,8 - 6 t)

Dimensions (b x h x l):	210 x 181 x 325
Weight:	46 kg
Tilt angle:	180°
Torque:	2.800 Nm at 300 bar
Retention torque:	ca. 7.100 Nm at 300 bar
Oil requirement:	0,42 ltr. / 180°
Operating pressure	210 bar
Max. operating pressure	310 bar
Build-up recommendations:	Syst. Lehnhoff HS03 Syst. Verachtert CW10

► JR Tilt 790 (6 - 8 t)

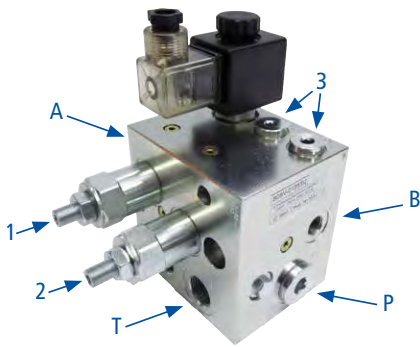
Dimensions (b x h x l):	270 x 232 x 402
Weight:	93 kg
Tilt angle:	180°
Torque:	6.200 Nm at 300 bar
Retention torque:	ca. 14.200 Nm at 300 bar
Oil requirement:	0,95 ltr. / 180°
Operating pressure	210 bar
Max. operating pressure	310 bar
Build-up recommendations:	Syst. Lehnhoff HS08 Syst. Verachtert CW10

► JR Tilt 1090 (8 - 10 t)

Dimensions (b x h x l):	310 x 280 x 450
Weight:	141 kg
Tilt angle:	180°
Torque:	11.750 Nm at 300 bar
Retention torque:	ca. 22.800 Nm at 300 bar
Oil requirement:	1,89 ltr. / 180°
Operating pressure	210 bar
Max. operating pressure	310 bar
Build-up recommendations:	Syst. Lehnhoff HS08

Hydraulic attachment kit

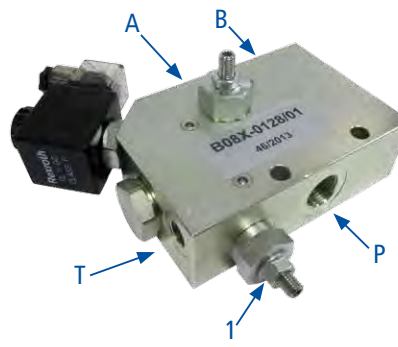
excavator side for double-acting quick-coupler cylinder



- A,B: control lines for quick-coupler
- P: main pump (Pmax. 420 bar)
- T: tank
- 1: adjustable unlocking pressure
- 2: adjustable locking pressure
- 3: measuring port for control lines

Hydraulic attachment kit

excavator side for single-acting quick-coupler cylinder



- A: control lines for quick-coupler
- B: priority oil flow leveling blade
- P: main pump (Pmax. 350 bar)
- T: tank
- 1: adjustable unlocking pressure



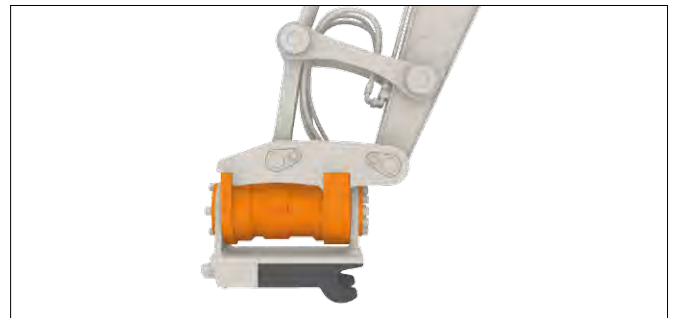
Hydraulic package

for outside hosing



Hydraulic package

for inside hosing



Your advantages:

- First-class customer care
- Practice-oriented order processing
- Customer-oriented engineering
- Innovative solutions
- State-of-the-art production
- Efficient logistics
- Convincing product quality
- Use of modern software
(e.g. software-aided FEM calculations)

