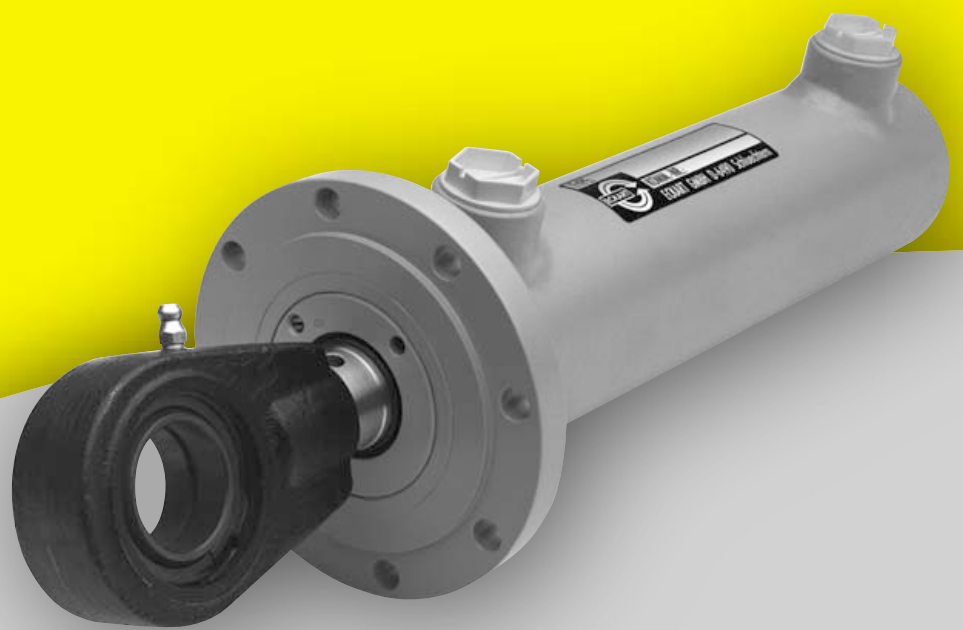


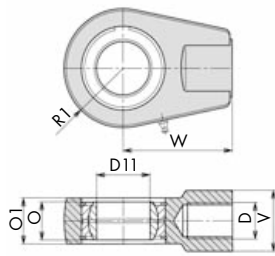
ECKART[®]
[HYDRAULIK · PNEUMATIK]



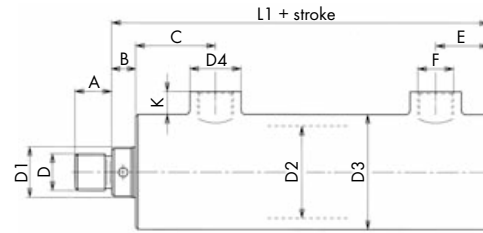
Hydraulic cylinder EHZ
Hydraulic / 250 bar

[GATEWAY
to new technologies.]

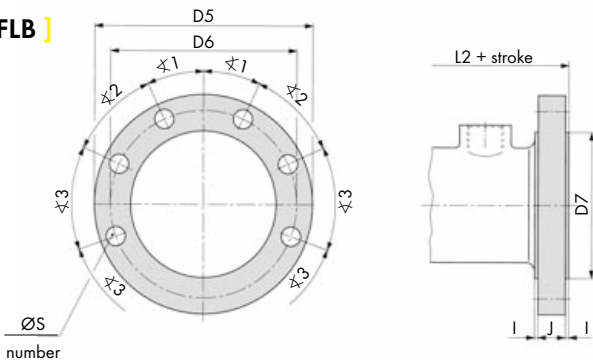
[SGK]



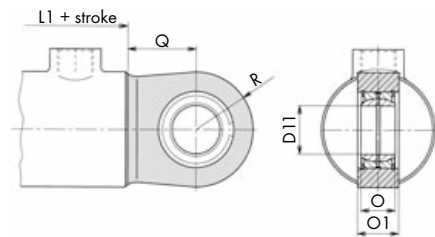
[Standard model]



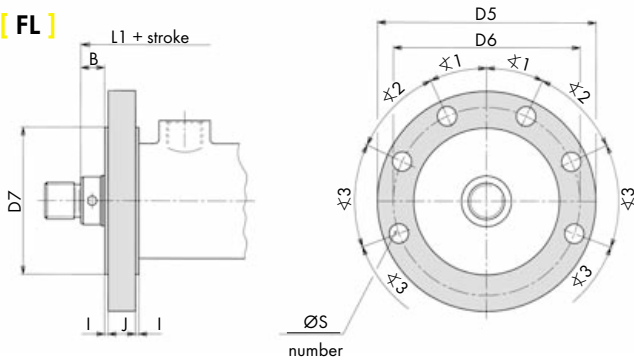
[FLB]



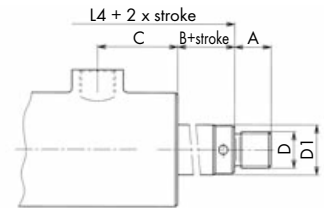
[BGK]



[FL]



[FLDK]



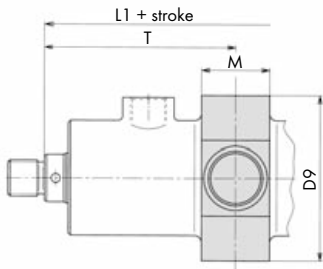
[Important technical information]

- The regulations of the Technical Supervision, Social Insurance Against Occupational Hazards and the respective environmental regulations etc. must be observed.
- Plant driven by a cylinder must be laid out in such a manner that in case of technical or human failure there is no danger of injury or death.
- We reserve the right to alter or improve design specifications without prior notice.

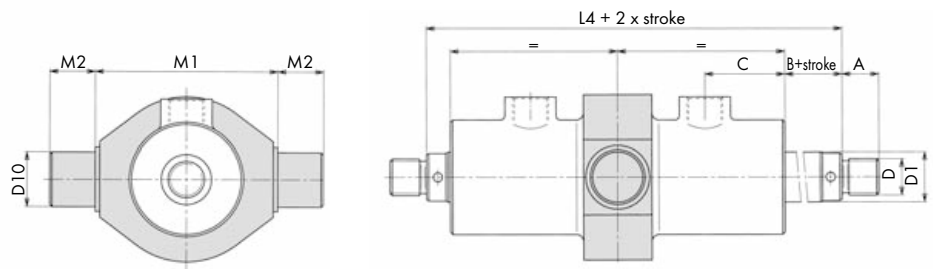


| Size (piston-Ø) Ø D2 | Hydraulic cylinder EHZ | | | | | | | | | | | | | | | | | | | | |
|----------------------------|---------------------------|-----|----|-----|---------|------|------|------|------|-------------|------|------|-------------|-------------|----|----------------|-----------------|-----|-----|-----|----|
| | rod Ø D1 ¹⁾ | A | B | C | D | Ø D3 | Ø D4 | Ø D5 | Ø D6 | Ø D7 h11 | Ø D8 | Ø D9 | Ø D10 f7 | Ø D11 K7 | E | F port size | G ¹⁾ | H | H1 | I | J |
| 40 | 22 | 16 | 9 | 38 | M16x1,5 | 50 | 30 | 96 | 82 | 64 | 13 | 68 | 20 | 25 | 27 | G 1/2" | 40 | 24 | 30 | 1,5 | 12 |
| 50 | 28 | 22 | 12 | 45 | M22x1,5 | 65 | 30 | 114 | 100 | 85 | 17 | 90 | 32 | 30 | 29 | G 1/2" | 50 | 34 | 40 | 2 | 12 |
| 63 | 36 | 28 | 15 | 51 | M28x1,5 | 78 | 35 | 128 | 114 | 100 | 20 | 103 | 40 | 35 | 32 | G 3/4" | 60 | 38 | 48 | 2,5 | 15 |
| 80 | 45 | 35 | 15 | 62 | M35x1,5 | 100 | 35 | 153 | 136 | 120 | 24 | 130 | 50 | 40 | 36 | G 3/4" | 70 | 48 | 60 | 3 | 18 |
| 100 | 56 | 45 | 18 | 73 | M45x1,5 | 125 | 45 | 190 | 170 | 150 | 30 | 155 | 63 | 50 | 46 | G 1" | 80 | 58 | 75 | 4 | 20 |
| 125 | 70 | 58 | 22 | 77 | M58x1,5 | 150 | 45 | 220 | 200 | 180 | 33 | 185 | 80 | 60 | 51 | G 1" | 90 | 68 | 90 | 4 | 24 |
| 160 | 90 | 80 | 25 | 106 | M80x2 | 190 | 55 | 285 | 258 | 230 | 45 | 235 | 100 | 80 | 59 | G 1 1/4" | 110 | 88 | 115 | 4 | 28 |
| 200 | 110 | 100 | 25 | 134 | M100x2 | 245 | 55 | 350 | 315 | 280 | 58 | 280 | 125 | 90 | 65 | G 1 1/4" | 140 | 118 | 150 | 5 | 34 |

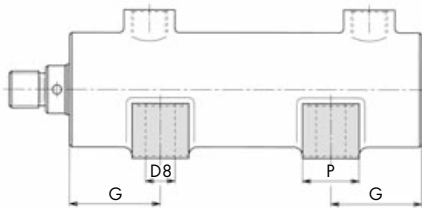
[SZ]



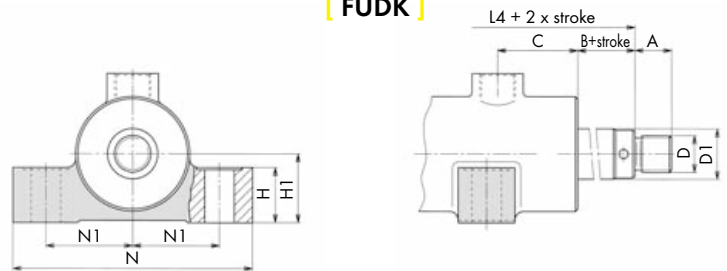
[SZDK]



[FU]



[FUDK]



[Ordering code]

EHZ . SGK . 80 - 45 - 530 . FL

Eckart-Hydraulic cylinder

spherical bearing
(only if necessary)

size (piston-Ø)

rod diameter

stroke

- FL - flange mounting
- FLB - flange mounting, bottom side
- BGK - spherical bearing, bottom side
- FU - foot mounting
- SZ - center trunnion
- FLDK - flange mounting, double ended rod
- FUDK - foot mounting, double ended rod
- SZDK - center trunnion, double ended rod

¹⁾ Non-standard options on request

²⁾ Tolerance of bottom swivel eye clevis according to EN 29-69

- Max. stroke 4000 mm, from 900 mm please consult factory

- Please find all other dimensions at drawing standard model.

| Hydraulic cylinder EHZ | | | | | | | | | | | | | | | | | | | | | Size (piston-Ø) Ø D2 | |
|------------------------|----------------|----------------|------------------|-----|-----------|------------|-----|-----|----|------------------|-----|-----|------|-----|---------------|----|------|----|--------------------------|-----|----------------------------|------------|
| K | L1 + stroke | L2 + stroke | L4 + 2xstroke | M | M1 h13 | M2 js16 | N | N1 | O | O1 ²⁾ | P | Q | R | R1 | ØS /number | ∠1 | ∠2 | ∠3 | T mind. ¹⁾ | V | W | |
| 16 | 114 | 127 | 148 | 43 | 90 | 16 | 105 | 38 | 20 | 23 | 25 | 45 | 27,5 | 30 | 8,5/6 | 40 | 50 | 60 | 100 | 25 | 50 | 40 |
| 16 | 130 | 145 | 174 | 53 | 112 | 25 | 135 | 50 | 22 | 28 | 35 | 51 | 32,5 | 34 | 8,5/8 | 35 | 32,5 | 45 | 115 | 32 | 60 | 50 |
| 18 | 150 | 168 | 205 | 63 | 125 | 32 | 160 | 60 | 25 | 30 | 40 | 61 | 41,5 | 42 | 8,5/8 | 40 | 27,5 | 45 | 132 | 40 | 70 | 63 |
| 18 | 167 | 188 | 230 | 67 | 150 | 40 | 200 | 75 | 28 | 35 | 50 | 69 | 50 | 50 | 11/8 | 35 | 32,5 | 45 | 145 | 49 | 85 | 80 |
| 20 | 200 | 225 | 266 | 87 | 180 | 50 | 240 | 90 | 35 | 40 | 60 | 88 | 61,5 | 63 | 14/8 | 30 | 37,5 | 45 | 172 | 61 | 105 | 100 |
| 20 | 218 | 247 | 298 | 107 | 224 | 63 | 300 | 115 | 44 | 50 | 70 | 100 | 70 | 70 | 14/12 | 25 | 20 | 30 | 190 | 75 | 130 | 125 |
| 23 | 264 | 297 | 370 | 127 | 280 | 80 | 380 | 145 | 55 | 60 | 90 | 141 | 90 | 95 | 18/12 | 25 | 20 | 30 | 238 | 102 | 170 | 160 |
| 23 | 303 | 344 | 432 | 157 | 335 | 100 | 460 | 175 | 60 | 65 | 120 | 150 | 113 | 112 | 22/12 | 25 | 20 | 30 | 281 | 124 | 210 | 200 |

[Function and features EHZ]

- ✓ The rod seals are according to ISO-standard. The piston seal is tried and tested since two decades
- ✓ Piston and rod diameter according to DIN-ISO 3320
- ✓ Area proportion $\varphi 1.4$ according to DIN-ISO 7181
- ✓ Five different mounting possibilities for a wide range of applications
- ✓ Compact and robust design
- ✓ Simple accurate contour
- ✓ Non-standard options on request

[Technical Data]

| | |
|---------------------|--|
| piston-Ø: | 40 to 200 mm |
| operating pressure: | 250 bar |
| test pressure: | 375 bar |
| stroke: | up to 4000 mm |
| time of stroke: | 0,3 m/s <i>higher on request</i> |
| medium: | mineral oil of group HLP/DIN 51524, page 2 and VDMA page 24318 <i>others on request</i> |
| temperature range: | -25°C to +75°C <i>higher on request</i> |
| seal: | NBR, PU (Standard) PTFE and Viton® (special design) |
| tube: | St-52 honed - tolerance H8 |
| rod: | Ck-45 hard chromed, thickness 0,025 mm diameter tolerance ISO f7 options: NIKROM treatment, hardend surface, stainless steel |
| mounting: | basic design, flange, foot, spherical bearing, clevis, center trunnion at different positions |

distributed by:

© ECKART GmbH 2009

ECKART®
[HYDRAULIK · PNEUMATIK]

ECKART GmbH
Am Knöschen 2
36381 Schlüchtern
Germany

Tel. +49 (0)6661 9628-0
Fax +49 (0)6661 9628-50
E-Mail info@eckart-gmbh.de

[www.eckart-gmbh.de]